



August 21st 2022

NEWSLETTER

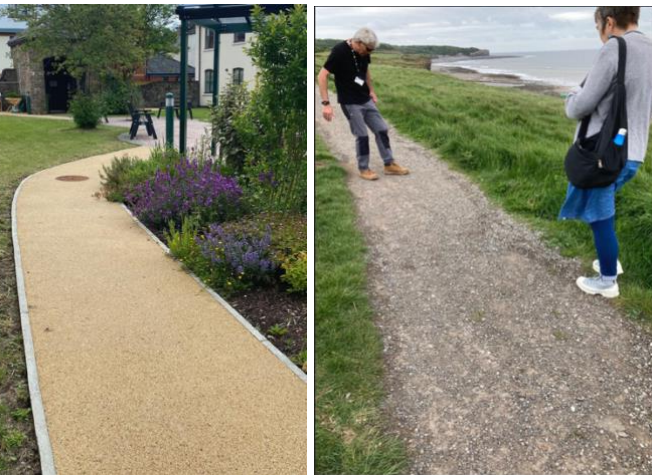
Ffawyddog, Dardy, Hillside, Legar, Llangattock Village

Path decision time



It's decision time for the recreation ground accessible path.

After weeks of detailed research, planning, drawing, measuring and tendering, Llangattock Councillors will decide on Tuesday who will build the new path around the park and what it will be made from. It won't be an easy decision as there are differences of opinion over factors such as price, sustainability and durability, and rising construction costs have pushed some options out of reach. Once the contractor is chosen, we hope to begin work as soon as possible after the schools return.



Councillors conducted several site visits at their own expense. They assessed the suitability of surfaces ranging from costly resin-bound to coloured and porous asphalt, recycled asphalt and environmentally friendly and visually attractive limestone. In the end, the Council went out to tender on limestone and coloured asphalt because it was more accessible for people with dementia and could achieve the best match with existing tarmac and other materials.

Huge range in prices makes for a hard choices

There was a vast range of prices between the surfaces and the three contractors who quoted for the work, with the most expensive being over £100,000 for a resin-bonded path and the least expensive being under £27,000 for limestone. The available budget is just under £50,000 from the Landfill Disposals Tax Communities Grant Scheme, not enough to go all the way round in asphalt. Councillors will also have to consider durability and the ongoing cost of repairs, which would have to be met from the Council tax.

Cynllun Cymunedau y Dreth Gwarediadau Tirlenwi

WcVA
CgGC



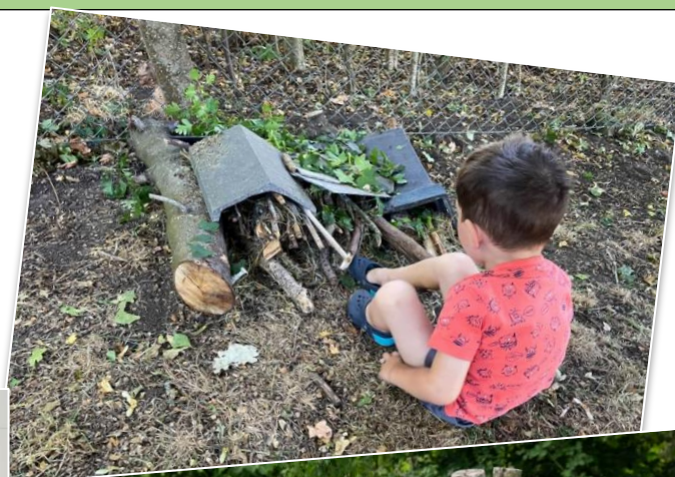
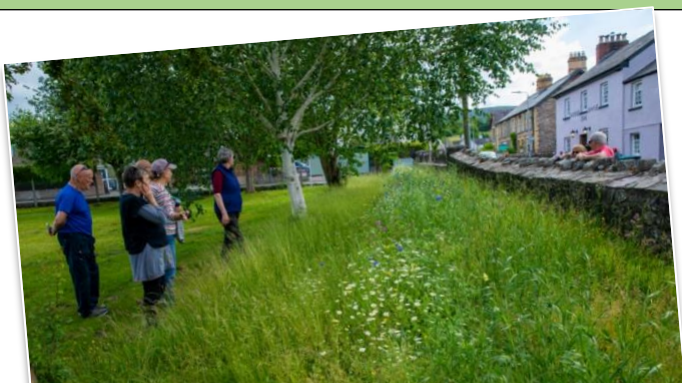
Landfill Disposals Tax Communities Scheme

Llangattock Community Council, C/O The Clerk, 16 Kennelwood, Gilwern NP7 0BD. Email Llangattockcc@gmail.com

In the end, Councillors may have to compromise over durability, appearance, environmental sustainability, and colour. They may decide to use one material in more heavily used areas and another, less durable material in less trafficked areas. Alternatively, they could choose to build the path in sections until further grants can be found to finish the project or borrow money instead, which would again have to be funded by the Council tax. In the interests of fairness, the selection process will be 'blind' with Councillors judging the quotes solely on price, availability and quality.



Environmental enhancements follow path scheme



The reason for building the path is to make all areas of Llangattock Recreation Ground accessible to people of all ages and abilities. These include the Memorial Garden, the zip wire and biodiversity areas, which we want to create as a result. Over the summer, bee-friendly flower borders have been created as part of this project, and local children recently joined Councillors and the Llangattock Village Society in creating bug hotels. If you would like to get involved in projects like these, please get in touch.

Llangattock Community Council, C/O The Clerk, 16 Kennelwood, Gilwern NP7 0BD. Email Llangattockcc@gmail.com